

KHM CLUSTERING TECHNIQUE AS A SEGMENTATION METHOD FOR ENDOSCOPIC COLOUR IMAGES

MARIUSZ FRĄCKIEWICZ, HENRYK PALUS

Institute of Automatic Control
Silesian University of Technology, ul. Akademicka 16, 44–100 Gliwice, Poland
e-mail: {Mariusz.Frackiewicz, Henryk.Palus}@polsl.pl

In this paper, the idea of applying the k -harmonic means (KHM) technique in biomedical colour image segmentation is presented. The k -means (KM) technique establishes a background for the comparison of clustering techniques. Two original initialization methods for both clustering techniques and two evaluation functions are described. The proposed method of colour image segmentation is completed by a postprocessing procedure. Experimental tests realized on real endoscopic colour images show the superiority of KHM over KM.

Keywords: biomedical colour image segmentation, k -harmonic means technique, k -means technique.

1. Introduction

Image segmentation is the process of partitioning an image into homogeneous and connected regions, often without using additional knowledge about objects in the image. In the segmented image the regions have, in contrast to single pixels, many interesting features like shape, texture, etc. The quality of image segmentation results has a tremendous impact on the next steps of image processing. Therefore, errors in the segmentation process (*oversegmentation*, *undersegmentation*) are a source of errors in image analysis and the recognition processes. The goal of colour image segmentation is to identify homogeneous regions in a colour image that represent objects or meaningful parts of objects present in a scene.

Segmentation techniques can be most often divided into the following classes: pixel-based techniques, region-based techniques, edge-based techniques and physics-based techniques (Cheng *et al.*, 2001; Palus, 2006). Sometimes fuzzy techniques and neural networks techniques belong to separate classes. Additionally, hybrid techniques exist, which integrate techniques from different classes.

In the literature there are presented many algorithms of segmentation that are tested on too small a number of images. Clustering is the process of partitioning a set of objects (pattern vectors) into subsets of similar objects called clusters. Pixel clustering in a three-dimensional colour space on the basis of pixel colour similarity is a

popular approach in the field of colour image segmentation. Clustering is often seen as an unsupervised classification of pixels. Colours, dominating in the image, create dense clusters in the colour space in a natural way.

Many different clustering techniques can be applied in colour image processing. One of the most popular and fastest clustering techniques is the k -means (KM) technique (MacQuenn, 1967), which is often used in a modified version, proposed in the 1980s (Linde *et al.*, 1980; Lloyd, 1982). The larger the number of clusters k , the more regions the image is segmented into. The processing of pixels without taking into consideration their neighbourhood is inherent to the nature of clustering techniques. In the segmented image the pixels that belong to one cluster can belong to many different regions.

2. KM technique for image segmentation

The first step of this technique is determining the number of clusters k and choosing initial cluster centres C_i :

$$C_1, C_2, \dots, C_k, \quad (1)$$

where $C_i = [R_i, G_i, B_i]$, $i = 1, 2, \dots, k$. The necessity of determining input data is the drawback of the KM technique. During the clustering process each pixel x is allocated to cluster K_j with the closest cluster centre using a predefined metric, for example, the Euclidean metric, the city block metric, the Mahalanobis metric, etc. For

pixel x , the condition of membership to the cluster K_j during iteration n can be formulated as follows:

$$x \in K_j(n) \Leftrightarrow \forall i = 1, 2, \dots, j-1, j+1, \dots, k \quad \|x - C_{j(n)}\| < \|x - C_{i(n)}\| \quad (2)$$

where C_j is the centre of cluster K_j .

The main idea of the KM method is to change the positions of cluster centres so that the sum of distances between all points of clusters and their centres be minimal. For cluster K_j the performance index J_j can be defined as follows:

$$J_j = \sum_{x \in K_j(n)} \|x - C_j(n+1)\|^2. \quad (3)$$

After each allocation of pixels, new positions of cluster centres are computed as arithmetical means. Starting from Eqn. (3), we can calculate colour components of the centre of cluster K_j formed after the $(n+1)$ -th iteration as arithmetical means of colour components of pixels belonging to this cluster:

$$C_{jR}(n+1) = \frac{1}{N_j(n)} \sum_{x \in K_j(n)} x_R, \quad (4)$$

$$C_{jG}(n+1) = \frac{1}{N_j(n)} \sum_{x \in K_j(n)} x_G, \quad (5)$$

$$C_{jB}(n+1) = \frac{1}{N_j(n)} \sum_{x \in K_j(n)} x_B, \quad (6)$$

where $N_j(n)$ stands for the number of pixels in cluster K_j after n iterations. Since this kind of averaging based on Eqns. (4)–(6) is repeated for all k clusters, the clustering procedure can be named a k -means technique.

In the next step, the difference between new and old positions of centres is checked. If it is larger than some threshold δ , then the next iteration starts and the distances from pixels to the new centres, pixels membership, etc. are calculated. If the difference is smaller than δ , then the clustering process is stopped. The smaller the value of δ , the larger the number of iterations. This stop criterion can be calculated according to

$$\|C_{i(n+1)} - C_{i(n)}\| \leq \delta, \quad \forall i = 1, 2, \dots, k. \quad (7)$$

The stopping criterion can be also realized by limiting the number of iterations. During the last step of the KM technique the colour of each pixel is turned to that of its cluster centre. The number of colours in the segmented image is reduced to k colours. The KM algorithm is guaranteed to converge, but it finds a local minimum only.

3. KHM technique for image segmentation

Zhang (Zhang *et al.*, 1999; Zhang, 2000) proposed a new improved version of the KM method based on harmonic means, rather than arithmetic means, named k -harmonic means (KHM). We assumed that a colour image contains N pixels and is treated as a clustering data set $X = \{x_1, \dots, x_N\}$.

After the initialization step, the number of clusters k and values of starting cluster centres $C = \{C_1, \dots, C_k\}$ are determined. Additionally, the KHM technique needs an input parameter p , which should be larger than 2. The membership function $m(C_j|x_i)$ defines, similarly to fuzzy c -means (FCM) (Bezdek, 1981), the degree of membership of pixel x_i in the cluster with centre C_j (Hamerly, 2003). This function has the following basic properties:

$$\begin{cases} m(C_j|x_i) \geq 0, \\ \sum_{j=1}^k m(C_j|x_i) = 1. \end{cases} \quad (8)$$

In the case of the KM technique, a “hard membership” was applied:

$$m(C_j|x_i) \in \{0, 1\}, \quad (9)$$

$$m(C_l|x_i) = \begin{cases} 1 & \text{if } l = \arg \min_j \|x_i - C_j\|^2, \\ 0 & \text{otherwise.} \end{cases} \quad (10)$$

In the case of the KHM technique, a “soft membership” is applied:

$$0 \leq m(C_j|x_i) \leq 1, \quad (11)$$

$$m(C_j|x_i) = \frac{\|x_i - C_j\|^{-p-2}}{\sum_{j=1}^k \|x_i - C_j\|^{-p-2}}, \quad p \geq 2. \quad (12)$$

The weight function $w(x_i)$ defines the influence of pixel x_i on computing new components of cluster centre C_k . This function has the following basic properties in the KM and FCM techniques:

$$w(x_i) > 0, \quad (13)$$

$$w(x_i) = 1. \quad (14)$$

In the case of the KHM technique, variable weights are applied:

$$w(x_i) = \frac{\sum_{j=1}^k \|x_i - C_j\|^{-p-2}}{\left(\sum_{j=1}^k \|x_i - C_j\|^{-p}\right)^2}, \quad p \geq 2. \quad (15)$$

We calculate new cluster centres C_j using a formula that is common for both the KM and KHM techniques:

$$C_j = \frac{\sum_{i=1}^N m(C_j|x_i)w(x_i)x_i}{\sum_{i=1}^N m(C_j|x_i)m(x_i)}. \quad (16)$$

The KM technique minimizes the following objective function:

$$KM(X, C) = \sum_{i=1}^N \min \|x_i - C_j\|^2. \quad (17)$$

The KHM technique minimizes the following objective function:

$$KHM(X, C) = \sum_{i=1}^N \frac{k}{\sum_{j=1}^k \|x_i - C_j\|^{-P}}. \quad (18)$$

4. Initialization methods

The stage of initialization in the clustering process consists in defining three elements: the number of clusters k , initial cluster centres and the stopping criterion. The number of clusters k can be assumed on the basis of *a priori* knowledge about image or histogram analysis or by conducting several clustering experiments with different values of k and then choosing the best result. If the number of clusters is too large, then the result is an oversegmented image. If it is too small, then the result is undersegmented.

The results of segmentation using the KM or the KHM technique depend on the position of the initial cluster centres. The classical version of the KM method used random methods for generation of initial cluster centres, i.e., these centres were chosen randomly from all colours in the image. More attractive are deterministic methods of initialization. A good example here is an arbitrary method based on uniformly partitioning the diagonal of an RGB cube (DC) into k segments. Grey levels in the middle of segments are used as initial centres. If an image is clustered into eight clusters, then eight initial cluster centres are located on the grey level axis.

Another adaptive method uses the size of a pixel cloud of a colour image and can be marked as SD. First, the mean values and standard deviations (SD) for each RGB component of all image pixels are calculated. Then, around the point of mean colour is constructed a rectangular cuboid with side lengths equal to $2\sigma_R$, $2\sigma_G$ and $2\sigma_B$. We assume that it lies within the RGB cube. Next, the main diagonal of cuboid is divided into k equal segments. The centres of these diagonal segments are used as initial cluster centres.

Initial cluster centres can also come from classic quantization algorithms, e.g., the median cut, or from

algorithms which determine dominant colours or salient colours.

In the case of the KM technique some methods of initialization form empty clusters, which was not observed for the KHM technique. The reason for empty cluster formation is the location of initial cluster centres at points which are outliers. A cluster lying outside a pixel cloud can be empty because all pixels of the cloud will belong to clusters enclosed in the cloud. Detection of empty clusters needs counting the number of unique colours after clustering and comparison with the number of clusters k . More information about initialization techniques is given by Fraćkiewicz and Palus (2009a).

5. Evaluation of segmentation results

The simplest kind of evaluation of a segmented image is subjective evaluation by a human expert or experts. Some researchers suppose that a human is the best judge in this evaluation process. In some applications of image segmentation, e.g., in object recognition, the recognition rate can serve as an indirect assessment of a segmentation algorithm independently of expert opinions about the segmented image. Quantitative methods of evaluation of segmentation results have been grouped in two categories: analytical and experimental ones. Analytical methods are weakly developed because there is no general image segmentation theory.

In the case of using the clustering method for image segmentation, we can apply the cluster validity measure $VM(I)$ as an evaluation function:

$$VM(I) = \frac{Intra}{Inter}, \quad (19)$$

where $Intra$ and $Inter$ are average intra-cluster and inter-cluster distances. The intra-cluster distance measures the within-cluster variability (cluster compactness):

$$Intra = \frac{1}{N} \sum_{j=1}^k \sum_{x \in K_j} \|x - C_j\|^2, \quad (20)$$

where N is the number of pixels in the image, k is the number of clusters, and C_j is the cluster centre of the cluster K_j .

The inter-cluster distance, which complements the intra-cluster distance, is a measure of separation between cluster centres:

$$Inter = \min (\|C_i - C_j\|)^2, \quad (21)$$

where $i = 1, 2, \dots, k-1$ and $j = i+1, \dots, k$. The $VM(I)$ measure should be minimized to get good segmentation results coming from compact and well-separated clusters.

Among experimental methods we can find an empirically defined evaluation function used by Borsotti *et al.*

Table 1. KM vs. KHM: comparison of segmentation results ($k = 5$).

$VM(I)$	I_1	I_2	I_3	I_4	I_5	I_6	I_7	I_8
<i>KM</i>	0.0019	0.0013	0.0025	0.0025	0.0018	0.0020	0.0022	0.0022
<i>KHM</i>	0.0016	0.0010	0.0022	0.0015	0.0015	0.0018	0.0020	0.0019
$Q(I)$	I_1	I_2	I_3	I_4	I_5	I_6	I_7	I_8
<i>KM</i>	95755	311723	7822	286546	7203	330159	4264	367838
<i>KHM</i>	2869	2426	3339	3556	7417	3612	4180	2509

Table 2. KM vs. KHM: comparison of segmentation results ($k = 6$).

$VM(I)$	I_1	I_2	I_3	I_4	I_5	I_6	I_7	I_8
<i>KM</i>	0.0011	0.0007	0.0015	0.0011	0.0011	0.0014	0.0013	0.0013
<i>KHM</i>	0.0010	0.0006	0.0014	0.0007	0.0008	0.0011	0.0012	0.0013
$Q(I)$	I_1	I_2	I_3	I_4	I_5	I_6	I_7	I_8
<i>KM</i>	308043	226860	249403	209188	276307	232903	454829	239397
<i>KHM</i>	2537	2215	2315	2323	4604	2505	3625	2026

Table 3. KM vs. KHM: comparison of segmentation results ($k = 7$).

$VM(I)$	I_1	I_2	I_3	I_4	I_5	I_6	I_7	I_8
<i>KM</i>	0.0007	0.0005	0.0010	0.0007	0.0007	0.0009	0.0008	0.0009
<i>KHM</i>	0.0006	0.0004	0.0009	0.0005	0.0005	0.0007	0.0008	0.0008
$Q(I)$	I_1	I_2	I_3	I_4	I_5	I_6	I_7	I_8
<i>KM</i>	336900	277220	254738	213846	190149	303352	278548	266385
<i>KHM</i>	2464	2155	2065	2208	3238	2212	2852	1968

Table 4. Number of regions before (R_1) and after postprocessing (R_2).

R_1	I_1	I_2	I_3	I_4	I_5	I_6	I_7	I_8
<i>KM</i>	33308	30796	29697	28122	27330	31837	30891	30738
<i>KHM</i>	7098	4905	3248	2952	3123	3802	5101	4103
R_2	I_1	I_2	I_3	I_4	I_5	I_6	I_7	I_8
<i>KM</i>	92	98	93	117	143	103	123	142
<i>KHM</i>	65	38	26	23	32	37	60	45

Table 5. Values of the evaluation function before ($Q_1(I)$) and after postprocessing ($Q_2(I)$).

$Q_1(I)$	I_1	I_2	I_3	I_4	I_5	I_6	I_7	I_8
<i>KM</i>	336900	277220	254738	213846	190149	303352	278548	266385
<i>KHM</i>	2464	2155	2065	2208	3238	2212	2852	1968
$Q_2(I)$	I_1	I_2	I_3	I_4	I_5	I_6	I_7	I_8
<i>KM</i>	413	431	489	629	1015	499	623	408
<i>KHM</i>	250	229	217	222	406	257	413	217

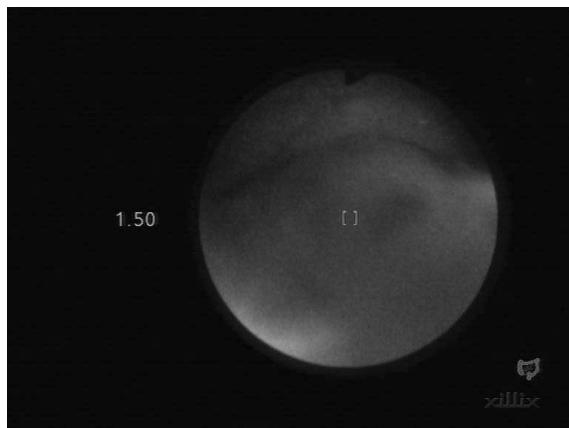
(1998) for evaluating segmentation results generated by clustering techniques:

$$Q(I) = \frac{1}{10000N} \sqrt{R} \sum_{i=1}^R \left[\frac{e_i^2}{1 + \log A_i} + \left(\frac{R(A_i)}{A_i} \right)^2 \right], \tag{22}$$

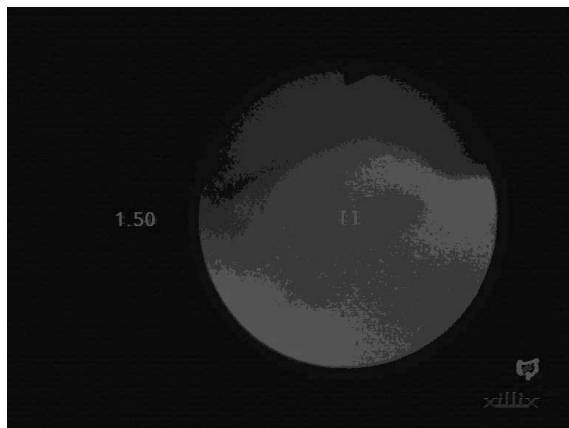
where I is the segmented image, N is the number of pixels in the image, R is the number of regions in the segmented image, A_i is the area of pixels of the region i , $R(A_i)$ is the number of regions having an area equal to

A_i , and e_i the colour error of region i . The colour error in the RGB space is calculated as the sum of the Euclidean distances between colour components of region pixels and components of average colour, which is an attribute of this region in the segmented image. The colour errors in different colour spaces are not comparable and therefore are transformed back to the RGB space. The first term of Eqn. (22) is a normalization factor, the second term penalizes results with too many regions (*over-segmentation*), and the third term penalizes results with

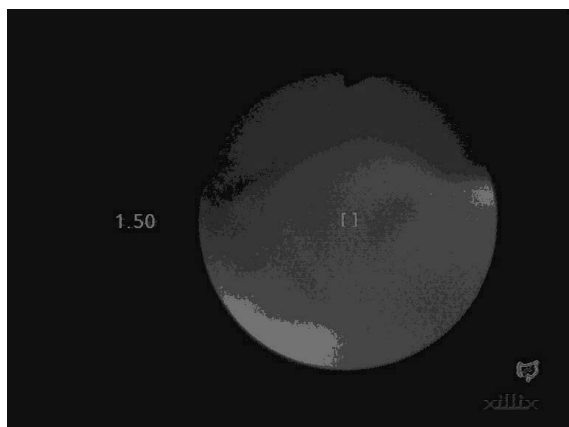
non-homogeneous regions. The last term is scaled by the area factor because the colour error is higher for large regions. The main idea of using this kind of function can be formulated as follows: the lower the value of $Q(I)$, the better the segmentation result.



(a)



(b)



(c)

Fig. 1. Example of endoscopic image segmentation (grey level version): original image I_4 (a), KM based segmentation (b), KHM based segmentation (c).

In modern oncology for detecting tumours, photodynamic diagnostics (PDD) is applied. This type of diagnostics is based on the phenomenon of different fluorescence of cancer tissues (reddish light visible in the central part of the colour version of Fig. 1) and healthy tissues (greenish light visible in the upper part of the colour version of Fig. 1) in laser blue light. A special fluorescent video endoscope, used in PDD, is the source of colour images of examined tissues (Fig. 1). For the experiment, a representative set of eight colour endoscopic images (I_1, \dots, I_8) was chosen. These images had the same spatial resolution (768×576 pixels) and 24-bit colour depth. During tests the following parameters of clustering techniques were used: colour space, RGB, the number of clusters $k = 5, 6$ and 7 (selected experimentally), the number of iterations, 15 , $p = 2.5$ (KHM) and initialization method, SD. The value of parameter p is chosen experimentally to process this type of images. After image segmentation by clustering (KM, KHM) we evaluated segmentation results with the help of the above $VM(I)$ and $Q(I)$ indices. Tables 1–3 contain the experimental data.

The analysis of data in Tables 1–3 leads to the conclusion that the KHM method segments better than KM. We can observe that the $VM(I)$ values are smaller in the case of the KHM technique i.e., an image is better clustered by the KHM method. The second index $Q(I)$ in 23 cases out of 24 is considerably smaller for images segmented by the KHM.

Clustering is an iterative process, i.e., it often needs a large number of iterations to reach the stop condition. During each iteration many computations were performed on each pixel, which considerably extended the computation time. Additionally, this time, the spatial resolution of the image and the number of clusters grew up together.

The computation time can be shortened by using multithread programming and multi-core CPUs. The programmer can create many threads within one process. Every thread disposes its area in operating memory and can get access to the process variables. We proposed a parallelization of computations by uniformly splitting images into sub-images. The number of sub-images is equal to the number of CPU cores. For example, in the case of a Quad Core processor the main thread splits in each iteration the image matrix into four parts and creates four additional computational threads. The operating system, balancing the load in CPU cores, assigns one computational thread to each core. The main thread checks the stopping condition after finishing computations in individual cores and aggregates the results. If the stopping condition is not reached, then the next iteration is executed. After reaching the stopping condition, the main thread writes down the output image and presents the obtained results. More information about parallelization results is given by Frackiewicz and Palus (2009b).

6. Postprocessing

Clustering techniques used for image segmentation have to be completed by the procedures of region labelling and postprocessing, e.g., adding small regions to the most similar large neighbour regions. One of the most effective methods of postprocessing is to remove the small regions from the image and to merge them into the neighbouring region with the most similar colour. It is not a difficult task, because after region labelling we have a list of regions that can be sorted according to their area. The threshold value of the area of a small region depends on the image. In one image the same threshold allows removing unnecessary artefacts, e.g., highlights or noise and in the other image it removes necessary details. After merging a small region, the mean colour of the new region is computed and the labels of pixels of the small region are changed. As result of such postprocessing, the number of regions in the segmented image significantly decreases.

Endoscopic images are very noisy and therefore after segmentation we can observe many small regions in the image. Applying postprocessing with definition of the small region as smaller than 100 pixels decreases the number of regions (Table 4) and improves the value of $Q(I)$ (Table 5). After postprocessing, the KHM technique still preserves its superiority over the KM one.

7. Conclusions

In comparison with the classic KM technique, KHM leads to better results of endoscopic image segmentation. Postprocessing based on small region removal improves the results of segmentation. As directions of further research, we can propose the following ideas: considering pixel neighbourhood information in the segmentation process by the KHM method, comparing KHM results with those of other techniques, e.g., region-based segmentation techniques and with those of manual segmentation by a doctor.

Acknowledgment

The second author's participation in this work has been partially supported by the Polish Ministry of Science and Higher Education under Grant No. R13 046 02.

The first version of this paper was presented during the 15th National Conference on Application of Mathematics to Biology and Medicine held in Szczyrk, Poland, in 2009 and published in a shortened form in the conference proceedings.

References

- Bezdek, J.C. (1981). *Pattern Recognition with Fuzzy Objective Function Algorithms*, Kluwer Academic Publishers, Norwell, MA.
- Borsotti, M., Campadelli, P. and Schettini, R. (1998). Quantitative evaluation of color image segmentation results, *Pattern Recognition Letters* **19**(8): 741–747.
- Cheng, H., Jiang, X., Sun, Y. and Wang, J. (2001). Color image segmentation: Advances and prospects, *Pattern Recognition* **34**(12): 2259–2281.
- Frąckiewicz, M. and Palus, H. (2009a). Initialization methods for clustering in colour image quantization, *Proceedings of the 7th Conference on Computer Methods and Systems (CMS'09)*, Cracow, Poland, pp. 469–472.
- Frąckiewicz, M. and Palus, H. (2009b). KM and KHM clustering techniques: Computing acceleration by multithread programming, *Proceedings of the 7th Conference on Computer Methods and Systems (CMS'09)*, Cracow, Poland, pp. 333–338.
- Hamerly, G.J. (2003). *Learning Structure and Concepts in Data through Data Clustering*, Ph.D. thesis, University of California, San Diego, CA.
- Linde, Y., Buzo, A. and Gray, R. (1980). An algorithm for vector quantizer design, *IEEE Transactions on Communications* **28**(1): 84–95.
- Lloyd, S. (1982). Least squares quantization in PCM, *IEEE Transactions on Information Theory* **28**(2): 129–137.
- MacQuenn, J. (1967). Some methods for classification and analysis of multivariate observations, *Proceedings of the 5th Berkeley Symposium on Mathematics, Statistics, and Probabilities*, Berkeley CA, USA, pp. 281–297.
- Palus, H. (2006). Color image segmentation: Selected techniques, in R. Lukac and K. Plataniotis (Eds.), *Color Image Processing: Methods and Applications*, CRC Press, Boca Raton, FL, pp. 103–108.
- Zhang, B. (2000). Generalized k-harmonic means—Boosting in unsupervised learning, *Technical Report TR HPL-2000-137*, Hewlett Packard Labs, Palo Alto, CA.
- Zhang, B., Hsu, M. and Dayal, U. (1999). K-harmonic means—Data clustering algorithm, *Technical Report TR HPL-1999-124*, Hewlett Packard Labs, Palo Alto, CA.



Mariusz Frąckiewicz received his M.Sc. degree in automatic control and robotics from the Silesian University of Technology in Gliwice, Poland, in 2006. At present he is a Ph.D. student and his main research interests cover colour image processing. In addition to that, he is also interested in computer programming, computer architectures and modern computer networks.



Henryk Palus received the M.Sc. degree in industrial electronics from the Moscow Power Engineering Institute (MEI) in 1981, and Ph.D. and D.Sc. (habilitation) degrees in automatic control and robotics from the Silesian University of Technology in Gliwice, Poland, in 1990 and 2007, respectively, where he was promoted to the rank of a professor in 2009. His research interest is focused on different problems of colour image acquisition, representation and processing. In

2002–2006 he co-organized international conferences on computer vision and graphics (*ICCVG*) and edited the proceedings. He is a member of the advisory board and a reviewer of *Machine Graphics and Vision*, a charter-member of the Polish Association of Image Processing (TPO, IAPR member), and a member of the Commission of Metrology of the Polish Academy of Sciences, Katowice Branch. He is an author or co-author of more than 80 papers in international and Polish journals as well as conference proceedings.

Received: 8 February 2010

Revised: 2 May 2010